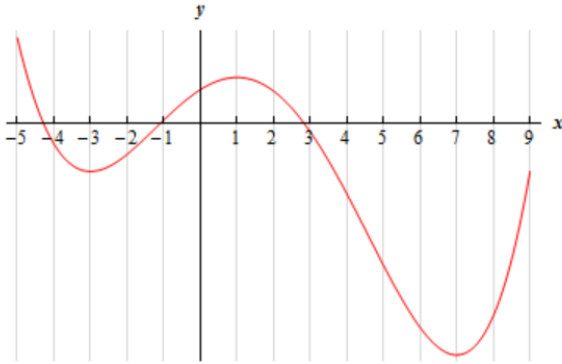


**Interpreting Derivative Graphs Practice (Ch. 3.6b Help Sessions WS)**

1)  $f'(x)$  graph is shown below:



$f'(x)$  sign line

$f''(x)$  sign line

Graph of  $f(x)$

Graph of  $f''(x)$

2)  $f'(x)$  graph is shown below on interval  $[-8, 6]$



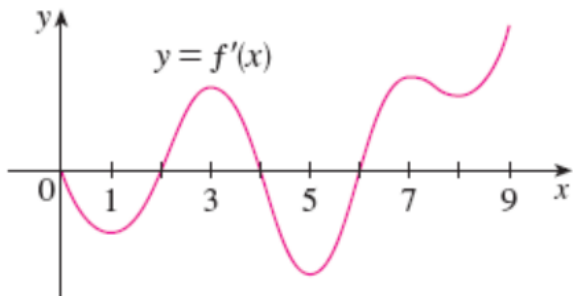
$f'(x)$  sign line

$f''(x)$  sign line

Graph of  $f(x)$

Graph of  $f''(x)$

3)  $f'(x)$  graph is shown below:



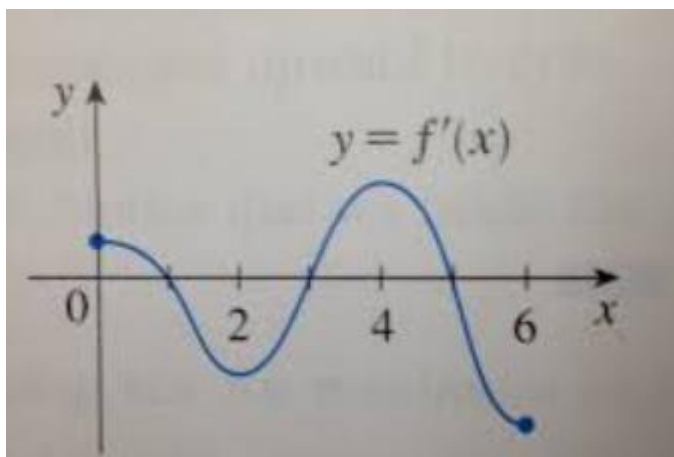
$f'(x)$  sign line

$f''(x)$  sign line

Graph of  $f(x)$

Graph of  $f''(x)$

4)  $f'(x)$  graph is shown below:



$f'(x)$  sign line

$f''(x)$  sign line

Graph of  $f(x)$

Graph of  $f''(x)$