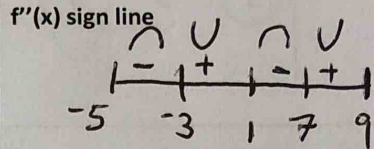
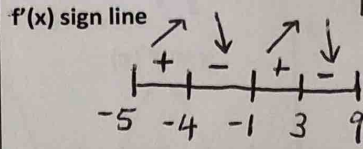
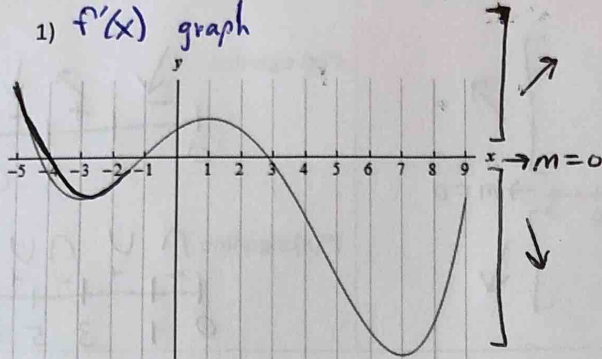


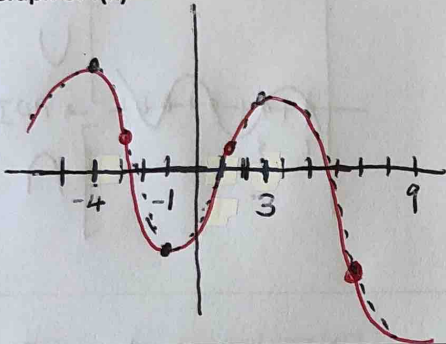
Interpreting Derivative Graphs Practice (Ch. 3.6b Help Sessions WS)

key

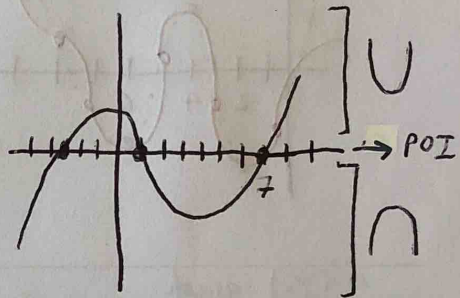
1) $f'(x)$ graph



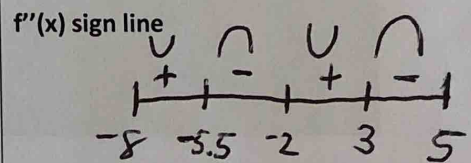
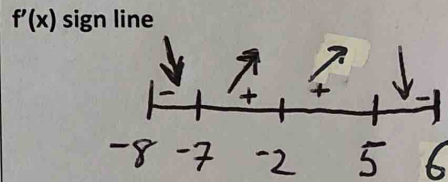
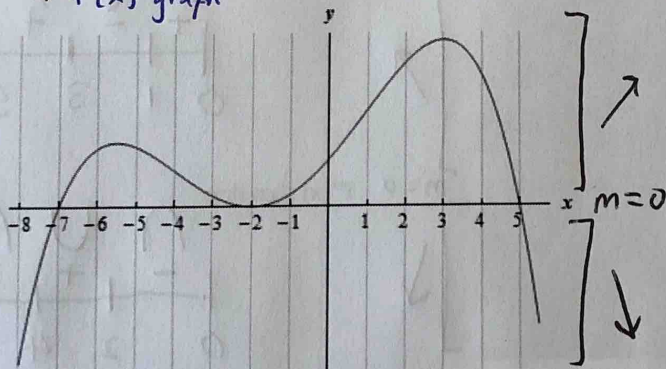
Graph of $f(x)$



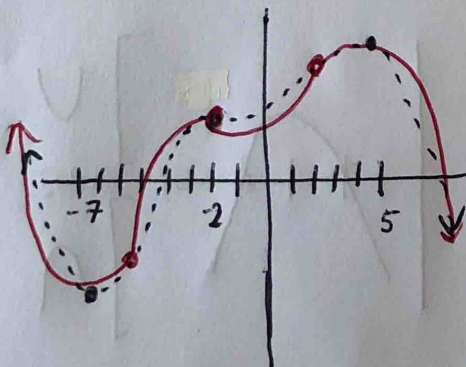
Graph of $f''(x)$



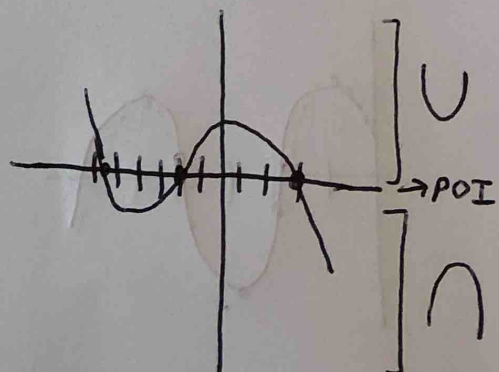
2) $f'(x)$ graph



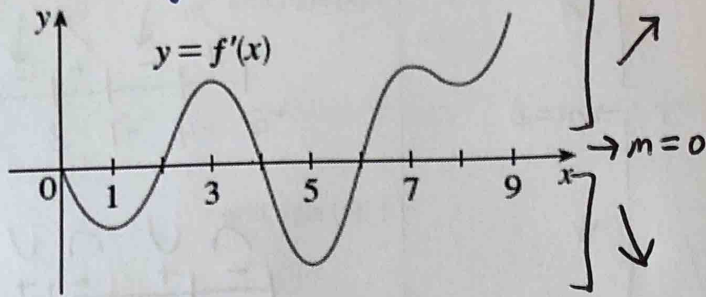
Graph of $f(x)$



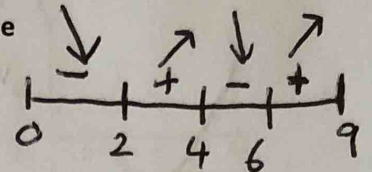
Graph of $f''(x)$



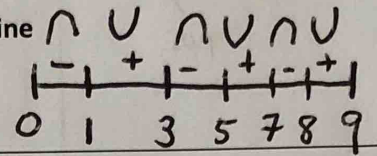
3) $f'(x)$ graph



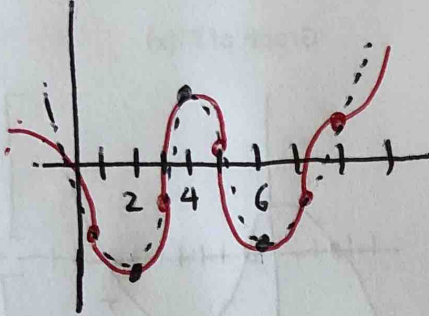
$f'(x)$ sign line



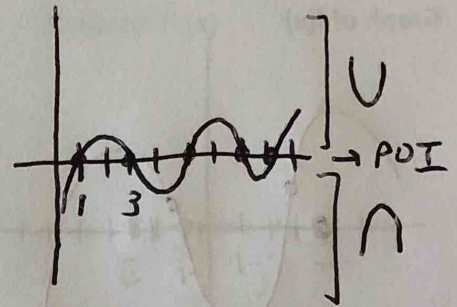
$f''(x)$ sign line



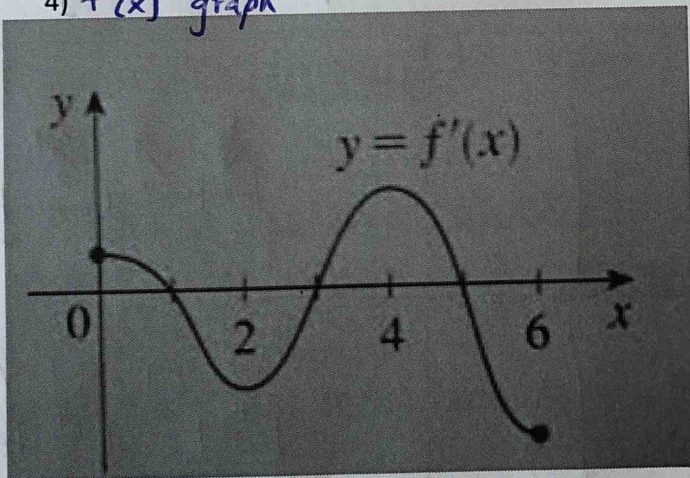
Graph of $f(x)$



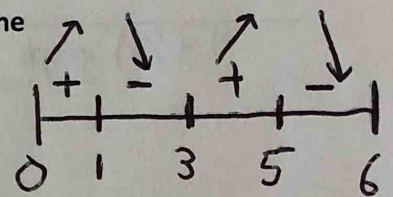
Graph of $f''(x)$



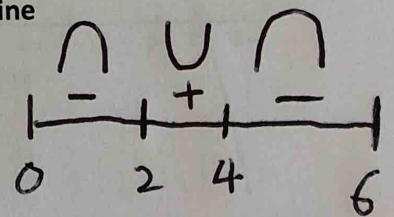
4) $f'(x)$ graph



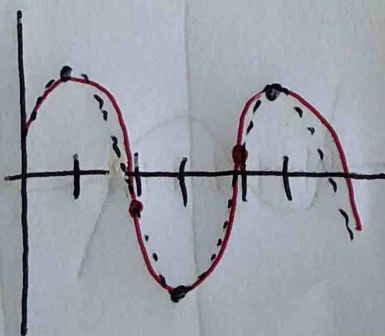
$f'(x)$ sign line



$f''(x)$ sign line



Graph of $f(x)$



Graph of $f''(x)$

