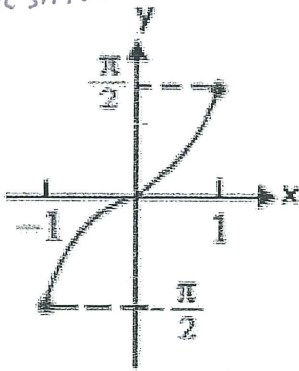


Inverse Trig Graphs

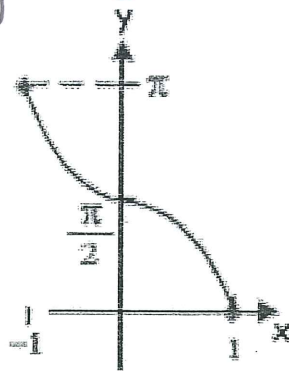
$y = \arcsin x$



Domain :  $-1 \leq x \leq 1$

Range :  $-\frac{\pi}{2} \leq y \leq \frac{\pi}{2}$

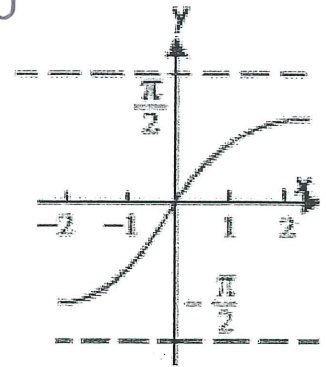
$y = \arccos x$



Domain :  $-1 \leq x \leq 1$

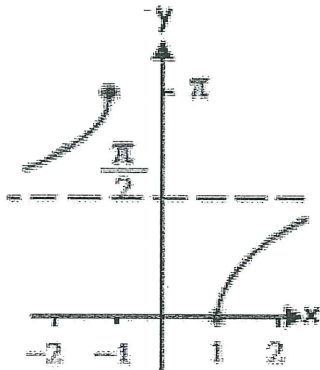
Range :  $0 \leq y \leq \pi$

$y = \arctan x$



Domain :  $-\infty < x < \infty$

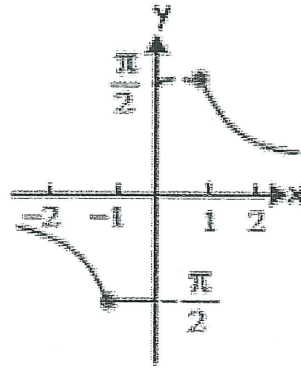
Range :  $-\frac{\pi}{2} < y < \frac{\pi}{2}$



$y = \text{arcsec } x$

Domain :  $x \leq -1$  or  $x \geq 1$

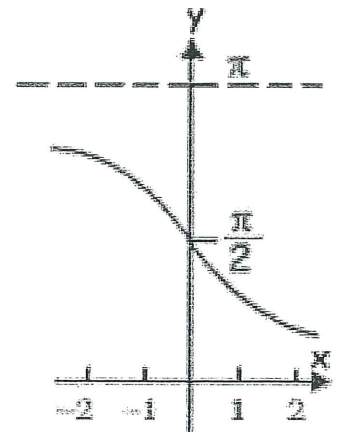
Range :  $0 \leq y \leq \pi, y \neq \frac{\pi}{2}$



$y = \text{arccsc } x$

Domain :  $x \leq -1$  or  $x \geq 1$

Range :  $-\frac{\pi}{2} \leq y \leq \frac{\pi}{2}, y \neq 0$



$y = \text{arccot } x$

Range :  $0 < y < \pi$

Domain :  $-\infty < x < \infty$