

SOH-CAH-TOA

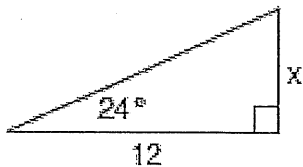
$$\sin \angle A = \frac{\text{Opp}}{\text{Hyp}}$$

$$\cos \angle A = \frac{\text{Adj}}{\text{Hyp}}$$

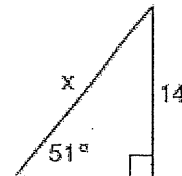
$$\tan \angle A = \frac{\text{Opp}}{\text{Adj}}$$

Find the value of each variable using trigonometric ratios.

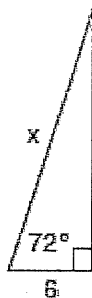
1.



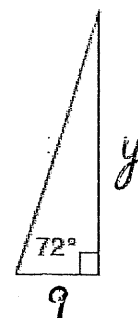
2.



3.



4.



SOH-CAH-TOA

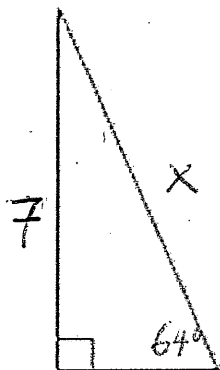
$$\sin \angle A = \frac{\text{Opp}}{\text{Hyp}}$$

$$\cos \angle A = \frac{\text{Adj}}{\text{Hyp}}$$

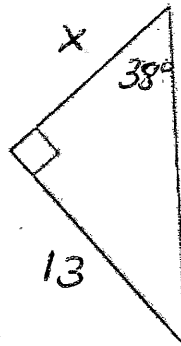
$$\tan \angle A = \frac{\text{Opp}}{\text{Adj}}$$

Find the value of each variable using trigonometric ratios.

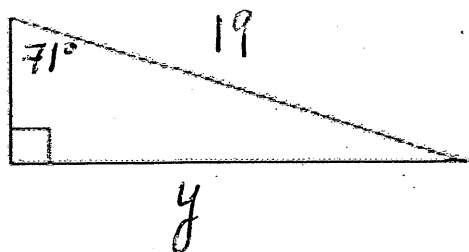
5.



6.



7.



8.

